

Deep-Propagating Gravity Wave Experiment (DEEPWAVE) Bureau of Meteorology Macquarie Island Radiosonde Data Set

1.0 Contacts:

NCAR/EOL Processing and Quality Control:

Scot Loehrer (NCAR/EOL)

loehrer@ucar.edu

Original Data Source:

Michael Joyce

Bureau of Meteorology

GPO Box 1289 Melbourne VIC 3001

Telephone: +61 3 9669 4242

m.joyce@bom.gov.au

2.0 Dataset Overview

The Australian Bureau of Meteorology routinely releases radiosondes from Macquarie Island (WMO 94998) which is about 1000 km to the southwest of the South Island of New Zealand (Figure 1). During the DEEPWAVE field phase, soundings were routinely released twice daily (00 and 12 UTC) and there were also some occasional special releases. This data set includes the quality controlled Macquarie Island soundings released for the DEEPWAVE field phase (28 May to 31 July 2014). A total of 140 quality-controlled, high resolution (2-second) soundings are contained in the final DEEPWAVE data set.

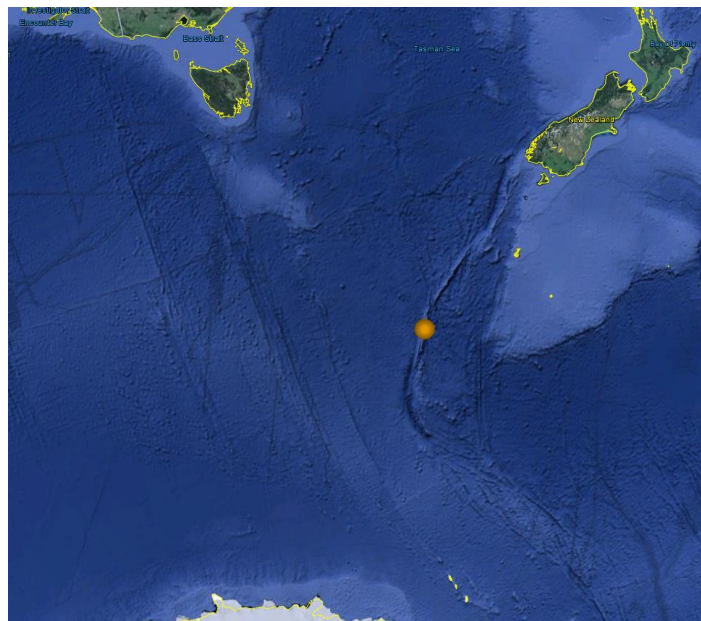


Figure 1. Location of the Bureau of Meteorology Macquarie Island radiosonde site.

The Deep-Propagating Gravity Wave Experiment (DEEPWAVE) was a field campaign aimed at examining the dynamics of gravity waves from the surface of the Earth to the mesosphere and lower thermosphere. The NSF/NCAR HIAPER Gulfstream-V and

DLR Falcon research aircraft were deployed along with a variety of surface-based instrumentation including surface meteorological networks, radars and lidars, sounding systems and regional models. Observations were focused around New Zealand due to it being an ideal natural laboratory to study deep propagating gravity waves and being one of the global gravity wave hot-spots in the upper stratosphere. Further information on DEEPWAVE is available at the DEEPWAVE web site: https://www.eol.ucar.edu/field_projects/deepwave and information on DEEPWAVE operations is available at the DEEPWAVE Field Catalog: <http://catalog.eol.ucar.edu/deepwave/>.

3.0 EOL Sounding Composite (ESC) File Format Description

The ESC is a columnar ASCII format consisting of 15 header records for each sounding followed by the data records with associated data quality flags.

3.1 Header Records

The header records (15 total records) contain a variety of metadata about the sounding (i.e. location, time, radiosonde type, etc). The first five header lines contain information identifying the sounding, and have a rigidly defined form. The following 7 header lines are used for auxiliary information and comments about the sounding, and may vary from dataset to dataset. The last 3 header records contain header information for the data columns. Line 13 holds the field names, line 14 the field units, and line 15 contains dashes ('-' characters) delineating the extent of the field.

The file standard header lines are as follows:

Line	Label (padded to 35 char)	Contents
1	Data Type:	Description of the type and resolution of data
2	Project ID:	Short name for the field project
3	Release Site Type/Site ID:	Description of the release site.
4	Release Location (lon,lat,alt):	Location of the release site.
5	UTC Release Time (y,m,d,h,m,s):	Time of release.

The release location is given as:

lon (deg min), lat (deg min), lon (dec. deg), lat (dec. deg), alt (m)

Longitude in deg min is in the format: ddd mm.mm'W where ddd is the number of degrees (with leading zeros if necessary), mm.mm is the decimal number of minutes, and W represents W or E for west or east longitude, respectively. Latitude has the same format as longitude, except there are only two digits for degrees and N or S for north/south latitude.

The time of release is given as: yyyy, mm, dd, hh:nn:ss.

Where yyyy is the year, mm is the month, dd is the day of month, and hh:nn:ss are the UTC hour, minute, and second respectively.

The seven non-standard header lines may contain any label and contents. The labels are padded to 35 characters to match the standard header lines. Records for this data set include the following non-standard header lines:

Line	Label (padded to 35 char)	Contents
6	Sonde Id/Sonde Type	Serial number and type of sonde
7	Ground Station Equipment	

The nominal release time for these soundings is the same as the actual time.

3.2 Data Records

The data records each contain time from release, pressure, temperature, dew point, relative humidity, U and V wind components, wind speed and direction, ascent rate, balloon position data, altitude, and quality control flags (see the QC code description). Each data line contains 21 fields, separated by spaces, with a total width of 130 characters. The data are right-justified within the fields. All fields have one decimal place of precision, with the exception of latitude and longitude, which have three decimal places of precision. The contents and sizes of the 21 fields that appear in each data record are as follows:

Field	Width	Format	Parameter	Units	Missing Value
1	6	F6.1	Time since release	Seconds	9999.0
2	6	F6.1	Pressure	Millibars	9999.0
3	5	F5.1	Dry-bulb Temperature	Degrees C	999.0
4	5	F5.1	Dew Point Temperature	Degrees C	999.0
5	5	F5.1	Relative Humidity	Percent	999.0
6	6	F6.1	U Wind Comp	m/s	9999.0
7	6	F6.1	V Wind Comp	m/s	9999.0
8	5	F5.1	Wind speed	m/s	999.0
9	5	F5.1	Wind direction	Degrees	999.0
10	5	F5.1	Ascent Rate	m/s	999.0
11	8	F8.3	Longitude	Degrees	9999.0
12	7	F7.3	Latitude	Degrees	999.0
13	5	F5.1	Elevation Angle	Degrees	999.0
14	5	F5.1	Azimuth Angle	Degrees	999.0
15	7	F7.1	Altitude	Meters	99999.0
16	4	F4.1	QC for Pressure	Code	99.0
17	4	F4.1	QC for Temperature	Code	99.0
18	4	F4.1	QC for Humidity	Code	99.0
19	4	F4.1	QC for U Wind	Code	99.0
20	4	F4.1	QC for V Wind	Code	99.0
21	4	F4.1	QC for Ascent Rate	Code	99.0

Fields 16 through 21 contain the data quality flags from the NCAR/Earth Observing Laboratory (EOL) sounding quality control procedures. The data quality flags are defined as follows:

Code	Description
1.0	Checked, datum seems physically reasonable. ("GOOD")
2.0	Checked, datum seems questionable on a physical basis. ("MAYBE")
3.0	Checked, datum seems to be in error. ("BAD")
4.0	Checked, datum is interpolated. ("ESTIMATED")
9.0	Checked, datum is missing. ("MISSING")
99.0	Unchecked (QC information is "missing".) ("UNCHECKED")

3.3 Data Specifics

The files contain data at two-second intervals.

The data are in files by day, so all soundings for a particular day are concatenated into a single file ordered by time. The file naming convention is:

Macquarie_Island_yyyymmdd.cls where yyyy is the year, mm is the month, and dd is the day of the month.

The Bureau of Meteorology Macquarie Island station utilized Vaisala RS92-K radiosondes with radar windfinding during DEEPWAVE. Vaisala DigiCORA MkIII version 3.64.1 ground station was used.

3.4 Sample Data

The following is a sample of the DEEPWAVE Bureau of Meteorology Macquarie Island high resolution radiosonde data in ESC format.

```
Data Type: Bureau of Meteorology Radiosonde/Ascending
Project ID: DEEPWAVE
Release Site Type/Site ID: Macquarie Island, Australia/94998
Release Location (lon,lat,alt): 158 56.40'E, 54 30.00'S, 158.940, -54.500, 6.0
UTC Release Time (y,m,d,h,m,s): 2014, 05, 28, 11:15:02
Sonde Id/Sonde Type: J4133983!00/Vaisala RS92 K with radar windfinding
Ground Station Equipment: Vaisala DigiCORA MkIII version 3.64.1
/
/
/
/
Nominal Release Time (y,m,d,h,m,s):2014, 05, 28, 11:15:02
Time Press Temp Dewpt RH Ucmp Vcmp spd dir Wcmp Lon Lat Ele Azi Alt Qp Qt Qrh Qu Qv QdZ
sec mb C C % m/s m/s m/s deg m/s deg deg deg m code code code code code code
-----
0.0 990.5 -1.4 -4.1 82.0 7.0 1.5 7.2 258.0 999.0 158.940 -54.500 0.0 78.0 6.0 99.0 99.0 99.0 99.0 99.0 9.0
2.0 989.1 -1.0 -5.3 72.9 8.2 0.8 8.2 264.8 5.5 158.940 -54.500 24.8 73.2 16.9 99.0 99.0 99.0 99.0 99.0 99.0
4.0 987.9 -1.1 -5.5 72.1 9.1 -0.1 9.1 270.4 4.9 158.940 -54.500 24.4 75.8 26.7 99.0 99.0 99.0 99.0 99.0 99.0
```

3.5 Station List

Site ID	WMO ID	Site Name	Country	Latitude	Longitude	Elev (m)
YMMQ	94998	Macquarie Island	Australia	-54.500	158.940	6

4.0 Data Quality Control Procedures

1. Each sounding was converted from its original format into the ESC format described above.

2. Each sounding was passed through a set of automated data quality checks which included basic gross limit checks as well as rate of change checks. This is further described in Section 4.1.
3. Each sounding was visually examined utilizing the NCAR/EOL XQC sounding quality control software. This is further described in Section 4.2.

4.1 Automated Data Quality Checks

This data set was passed through a set of automated data quality checks. This procedure includes both gross limit checks on all parameters as well as rate-of-change checks on temperature, pressure, and ascent rate. A version of these checks is described in Loehrer et al. (1996) and Loehrer et al. (1998).

4.1.1 Gross Limit Checks

These checks were conducted on each sounding and the data quality flags in the ESC files were adjusted as appropriate. Only the data point under examination was flagged. All checks also produced warning messages that specified the location of the problem and the severity of the issue. These warning messages were then summarized statistically and examined to determine any consistent issues.

For this data set NCAR/EOL conducted the following gross limit checks. In the table P = pressure, T = temperature, RH = relative humidity, U = U wind component, V = V wind component, B= bad, and Q = questionable.

Parameter	Check	Parameter(s) Flagged	Flag Applied
Pressure	<0 or > 1050	P	B
Altitude	< 0 or >40000	P, T, RH	Q
Temperature	< -90 or > 45	T	B
Dew Point	< -99.9 or > 33 > T	RH T, RH	Q Q
Wind Speed	< 0 or > 100 > 150	U, V U, V	Q B
U Wind	< 0 or > 100 > 150	U U	Q B
V Wind	< 0 or > 100 > 150	V V	Q B
Wind Direction	< 0 or > 360	U, V	B
Ascent Rate	< -10 or > 10	P, T, RH	Q

4.1.2 Vertical Consistency Checks

These checks were conducted on each sounding and the data quality flags in the ESC files were adjusted as appropriate. These checks were started at the surface and compared each neighboring data record. In the case of checks that ensured that the values increased/decreased as expected, only the data point under examination was flagged. However, for the other checks, all of the data points used in the examination were flagged. All items within the table are as previously defined. All checks also produced warning messages that specified the location of the problem and the

severity of the issue. These warning messages were then summarized statistically and examined to determine any consistent issues.

Parameter	Check	Parameter(s) Flagged	Flag Applied
Time	Decreasing/equal	None	None.
Altitude	Decreasing/equal	P, T, RH	Q
Pressure	Increasing/equal	P, T, TH	Q
	> 1mb/s or < -1mb/s	P, T, TH	Q
	> 2mb/s or < -2mb/s	P, T, TH	B
Temperature	< -15°C/km	P, T, RH	Q
	< -30°C/km	P, T, RH	B
	> 50°C/km	P, T, RH	Q
	> 100°C/km	P, T, RH	B
Ascent Rate	> 3m/s or < -3m/s	P	Q
	> 5m/s or < -5m/s	P	B

4.2 Visual Data Quality Checks

Each sounding was visually examined using the NCAR/EOL XQC sounding data quality control software. This software allows the user to view a skew-t/log-p diagram of each sounding and apply data quality flags as appropriate. The user can zoom in on sections of soundings for detailed examination and can adjust the data quality flags for an individual point, sections of soundings, or entire soundings for each parameter individually. The software also allows the user to override the quality flags applied by the automated procedure.

4.3 Data Quality Issues of Note

The data quality control procedures outlined above allows us to identify and, in some cases, resolve issues that could potentially impact research performed using these data sets. The following issues were noted in these soundings.

No issues of note.

5.0 References

Loehrer, S. M., T. A. Edmands, and J. A. Moore, 1996: TOGA COARE upper-air sounding data archive: development and quality control procedures. *Bull. Amer. Meteor. Soc.*, 77, 2651-2671.

Loehrer, S. M., S. F. Williams, and J. A. Moore, 1998: Results from UCAR/JOSS quality control of atmospheric soundings from field projects. Preprints, Tenth Symposium on Meteorological Observations and Instrumentation, Phoenix, AZ, Amer. Meteor. Soc., 1-6.