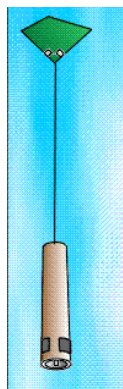


[Printer Friendly Version](#)



Processed Dropwindsonde Observations in FRD Format

HRD's Full-Resolution Data (FRD) files are the output from the data received from HRD's Editsonde program as used either on our onboard computer during a flight or, more likely, in post-flight quality control processing. It is in a standardized ASCII format. Each file begins with a header identifying the sonde, the date and time the sonde was processed. There follows several lines identifying the processing parameters, such as filters and bias corrections that have been applied as well as processor comments. The next block contains the launch information, such as time and location of launch and flight level temperature, pressure and geopotential altitude at the aircraft at time of launch. The main body of data follows beginning with a header line listing each column parameter and units. Each line of data will contain the observation sequential number, elapsed time, the meteorological observations, as well as the latitude, longitude, and altitude as determined by the sonde's GPS navigation chip. The usual time interval between observations is one half second.

Example

```
=====
DROPWINDSONDE PROCESSING RECORD                               Sonde: 053716110
PDS file written Sep 21, 2007.                               Format: V6.05
Aircraft: N42RF                                             Date: 070921   Time: 183312 UTC
-----
Bias corrections: PR = .0 mb  TE = .0 C  RH = .0 %  PRB = .4 mb
Filters (LPF):   PTH = 10 s  WIND = 10 s  Hyd anchor = SFC
Dyn RH correction = N  WSHR COR = Y  Splash PR = 1008.6 mb
Estimated PR used = N  GPS VERR = .15 m/s  HYD SFCP = 1010.3 mb
Dyn T correction = Y  WGACORR = -1.6 m  AC GA ADJ = .0 m
-----
COMMENTS: None
=====

Date: 070921  Lat: 29.14 N  TA: 16.1 C  PS: 844.3 mb  WD: 350 deg
Time: 183312  Lon: 87.29 W  TD: -999.0 C  GA: 1554 m  WS: 8.8 m/s
SID: 053716110  RH: -999.0 %  Navaid: GP
=====

IX  t (s)  P (mb)  T (C)  RH (%)  Z (m)  WD  WS (m/s)  U (m/s)  V (m/s)  NS  WZ (m/s)  ZW (m)  FP  FT  FH  FW  LAT (N)  LON (E)  ZW (ft)  WS (kt)  WS (mph)  THETA (K)
0001  .3  844.9  16.13  -999.0  1541  351  8.71  1.34  -8.61  -999  -999.0  1540  3  3  0  3  29.1439  -87.2948  5052  16.91  19.52  -999.00
0002  .8  845.4  16.18  -999.0  1536  354  8.44  .84  -8.40  -999  -999.0  1534  3  3  0  3  29.1438  -87.2948  5033  16.38  18.91  -999.00
0003  1.3  846.0  16.21  -999.0  1530  355  8.36  .70  -8.34  -999  -999.0  1528  3  3  0  3  29.1438  -87.2948  5014  16.23  18.74  -999.00
0004  1.8  846.6  16.25  -999.0  1524  356  8.29  .55  -8.27  -999  -999.0  1523  3  3  0  3  29.1437  -87.2948  4995  16.08  18.57  -999.00
```

Please contact [Sim Aberson](#) or [Mike Black](#) if you have any questions about FRD format.

Last modified: 23 May 2008.
 Please report any problems to the [HRD webmaster](#).



Links of Interest

- [Hurricane Field Program](#)
- [Current Hurricane Data](#)
- [Hurricane Forecast](#)
- [HRD Profile](#)
- [HRD Calendar](#)
- [HRD](#)
- [External Links](#)

AOML Resources

- [AOML](#)
- [Contact Us](#)
- [Information](#)
- [Sea State](#)
- [Sea Surface Temperature](#)
- [Sea Level Pressure](#)
- [Sea Level](#)
- [Sea Surface Salinity](#)
- [Sea Surface Wind](#)
- [Sea Surface Temperature/Salinity](#)
- [Sea Surface Wind/Salinity](#)

Employment

- [Careers](#)

Stay Connected