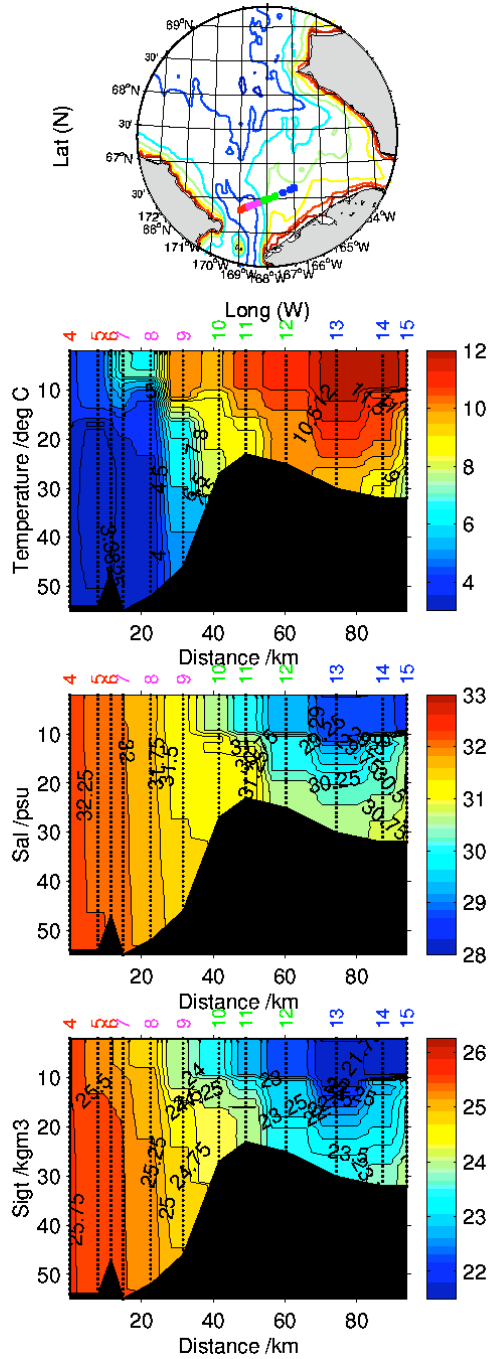
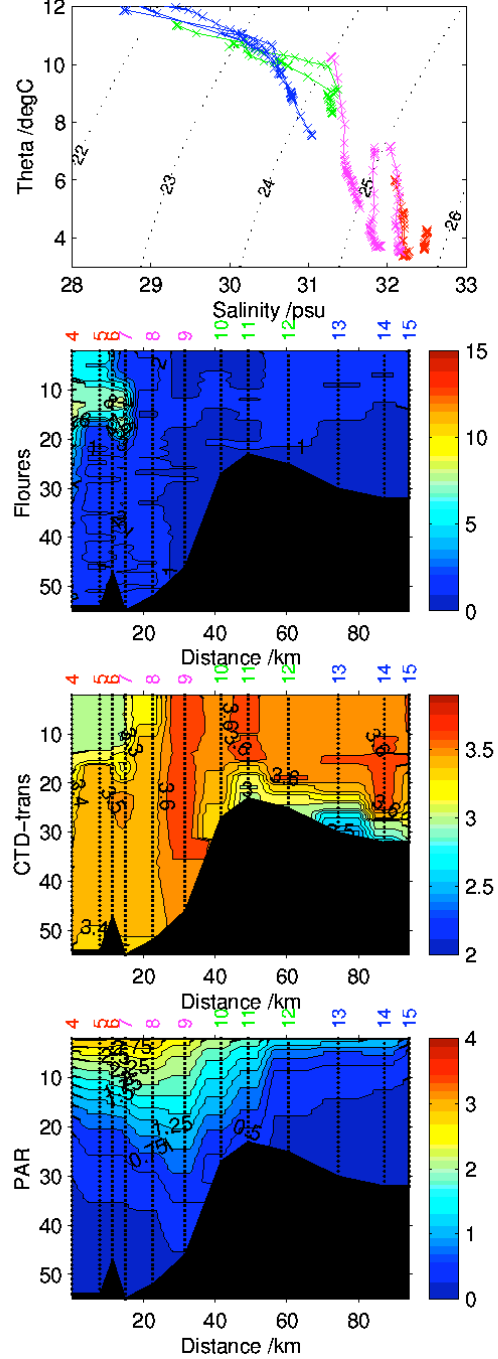


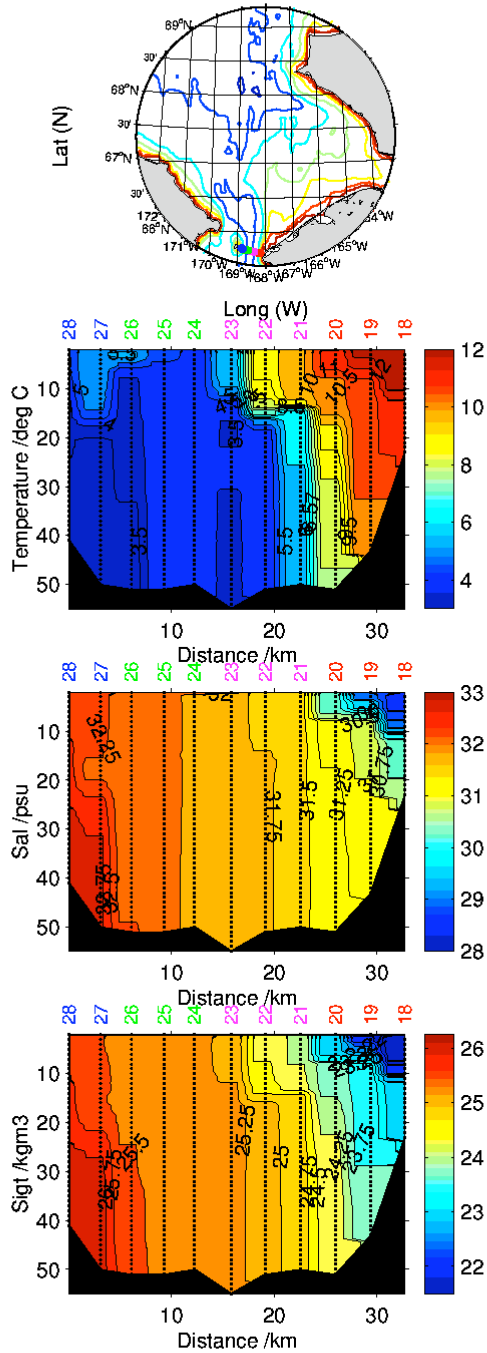
HX290 Aug/Sept 2004 – A3L 004to015



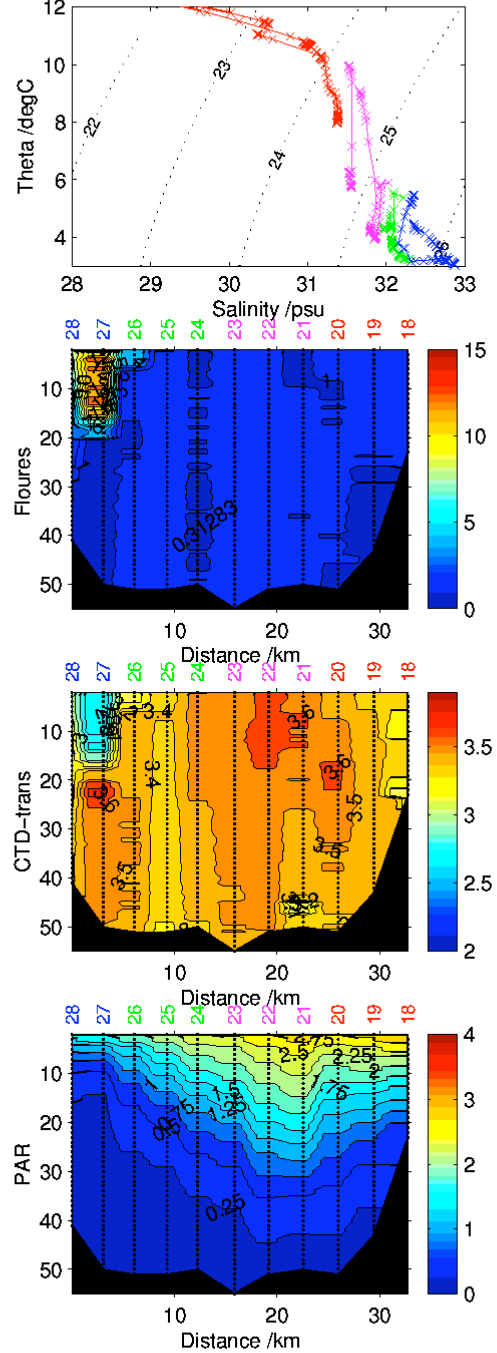
PreCalSept04, (Woodgate 18-Sep-2004)



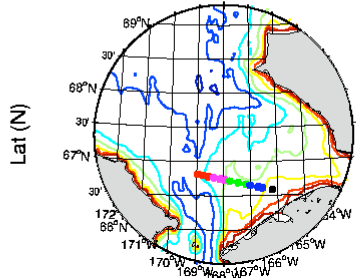
HX290 Aug/Sept 2004 – BSL(1) 028to018



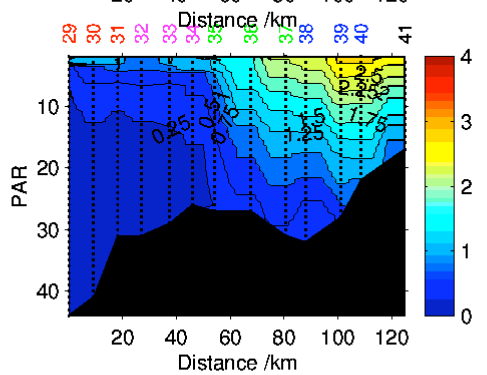
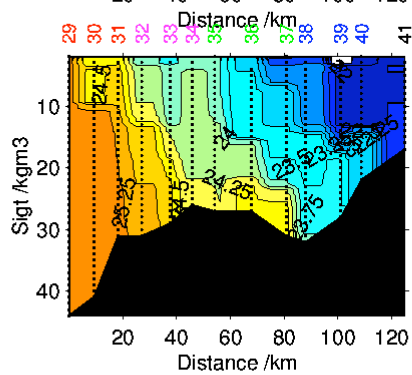
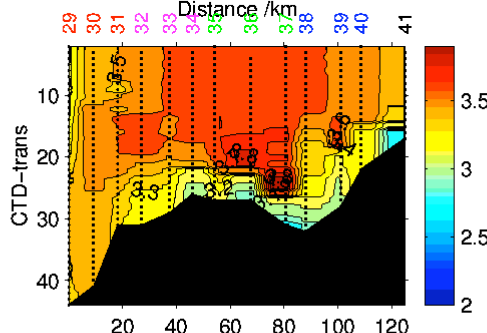
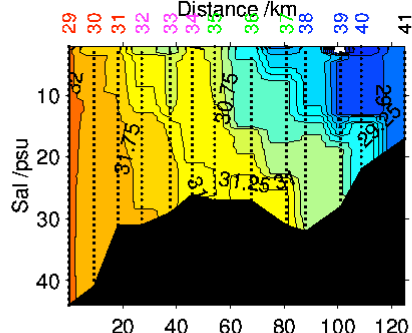
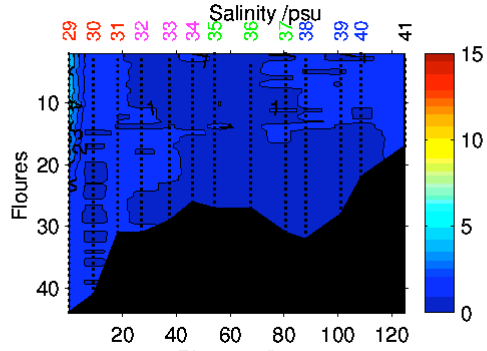
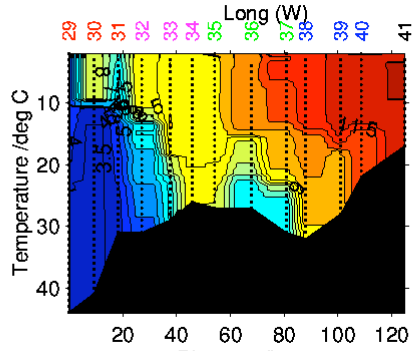
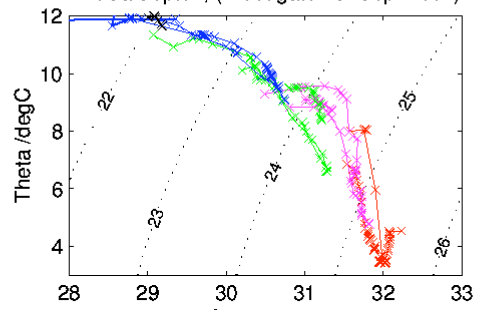
PreCalSept04, (Woodgate 18-Sep-2004)



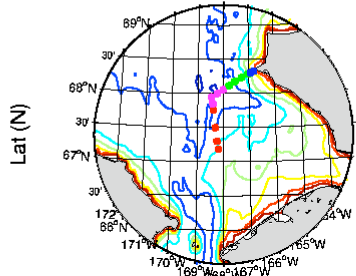
HX290 Aug/Sept 2004 – CHUK 029to041



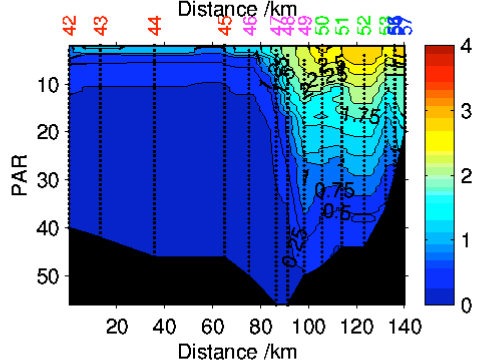
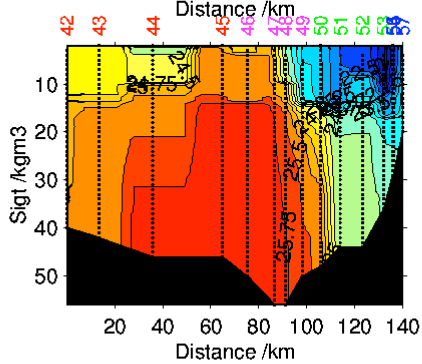
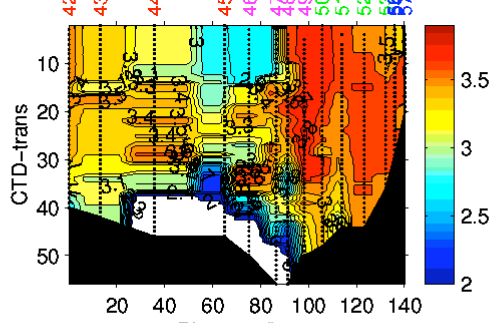
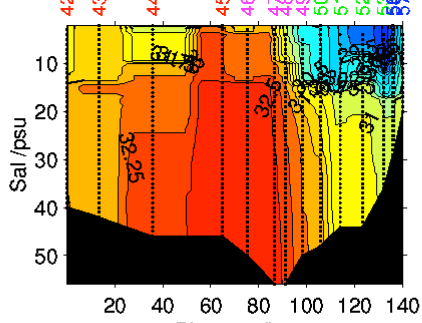
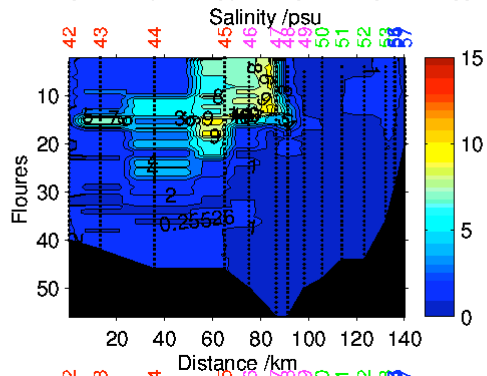
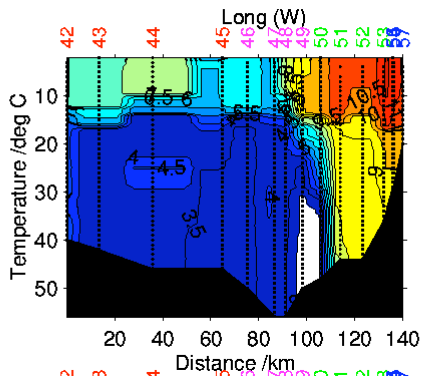
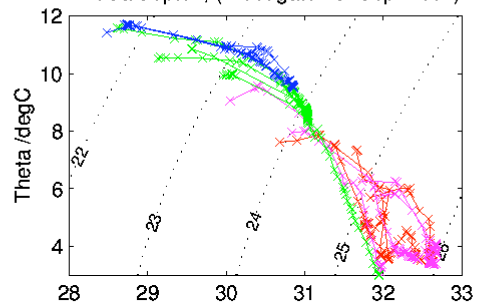
PreCalSept04, (Woodgate 18-Sep-2004)



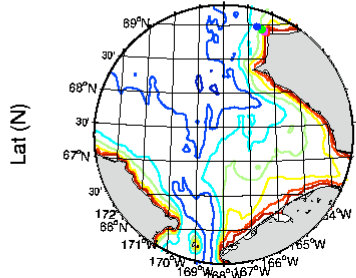
HX290 Aug/Sept 2004 – PHL 042to057



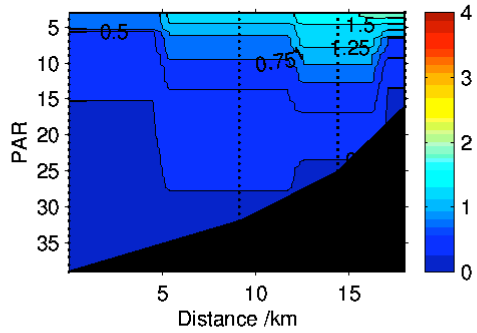
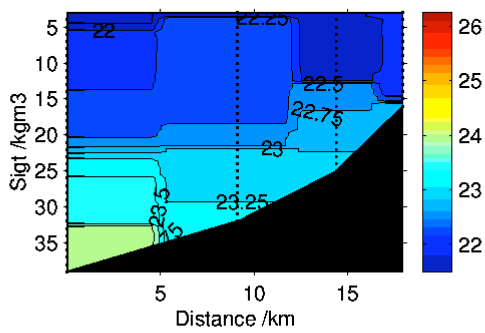
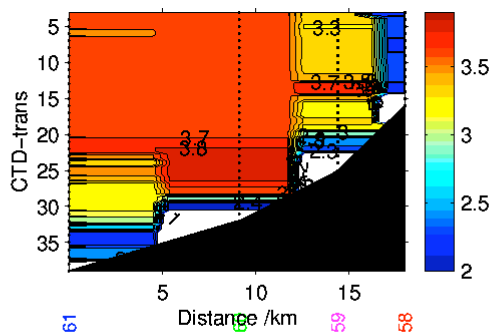
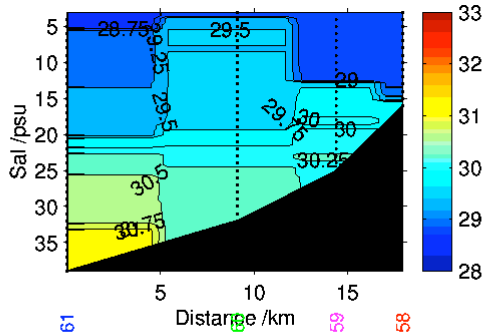
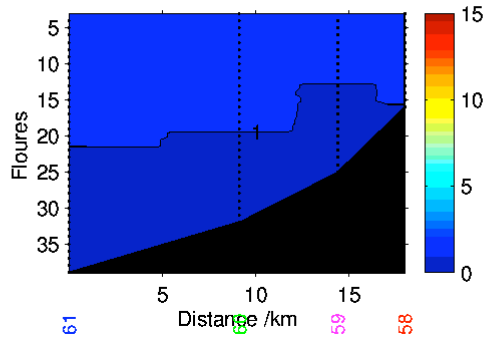
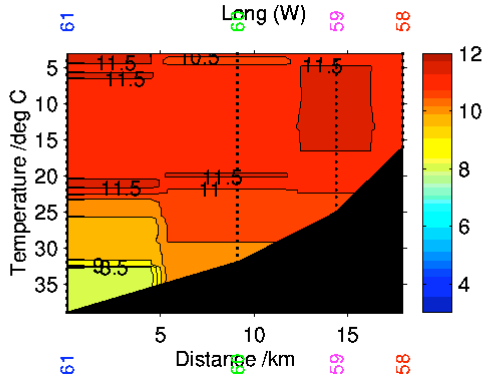
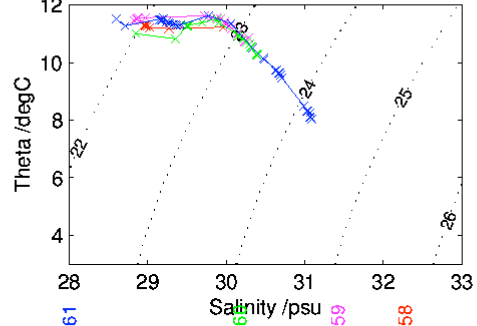
PreCalSept04, (Woodgate 18-Sep-2004)



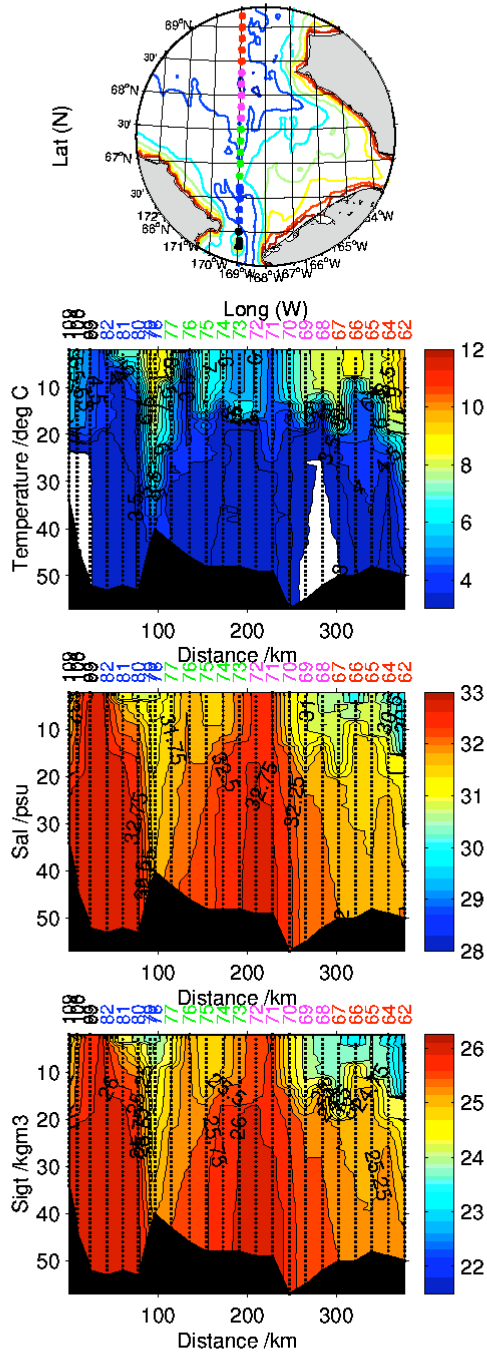
HX290 Aug/Sept 2004 – CPL 061to058



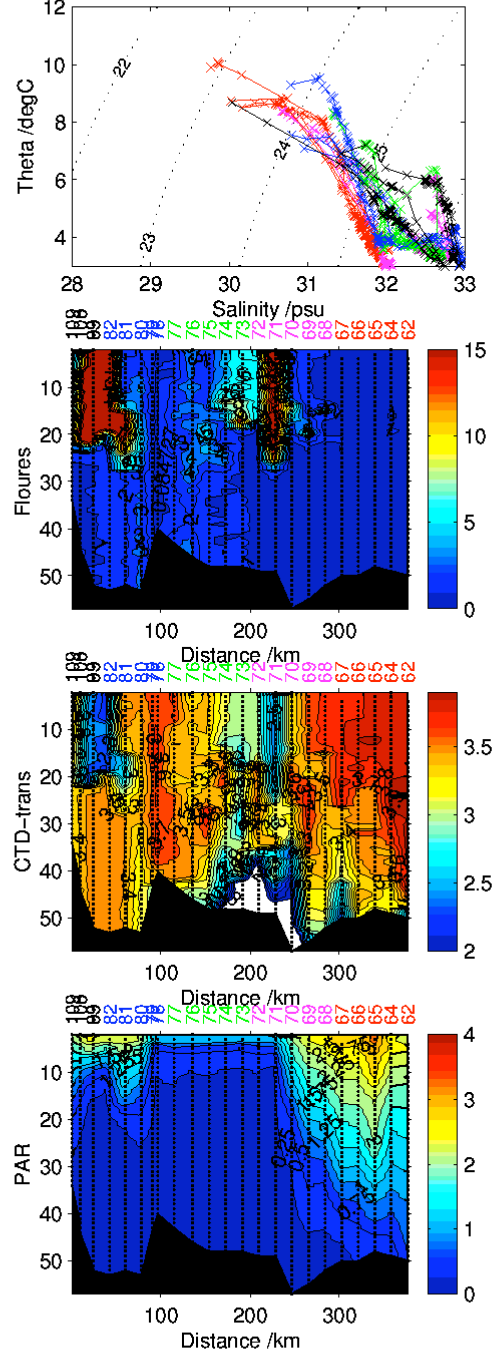
PreCalSept04, (Woodgate 18-Sep-2004)



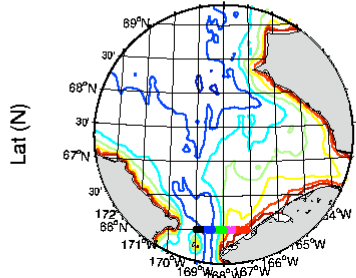
HX290 Aug/Sept 2004 – CCL 109to062



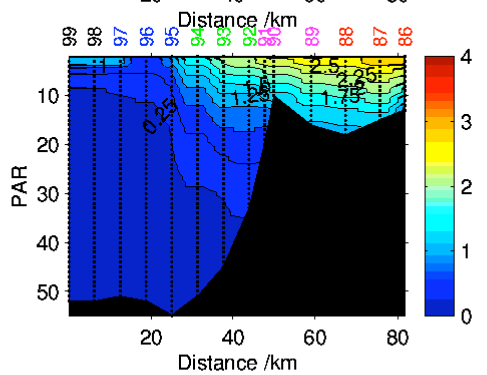
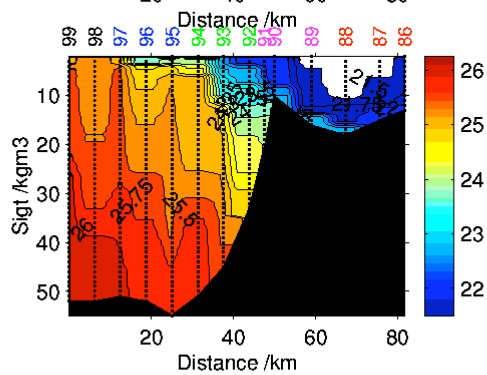
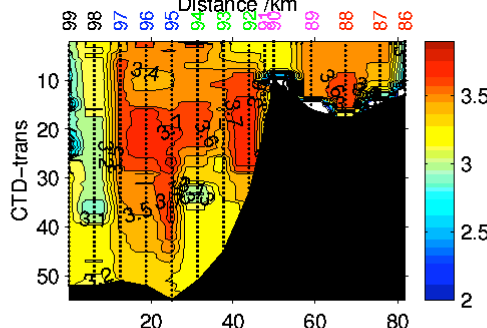
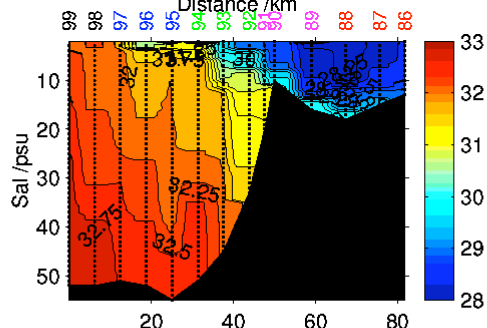
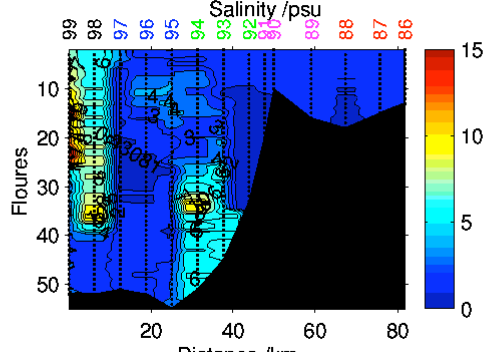
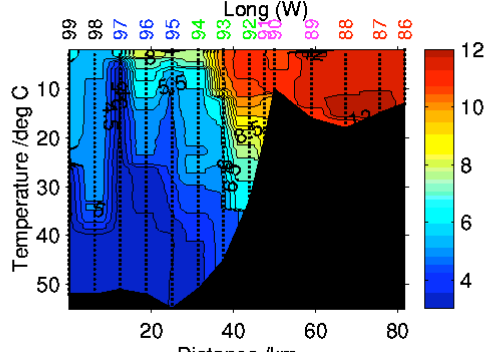
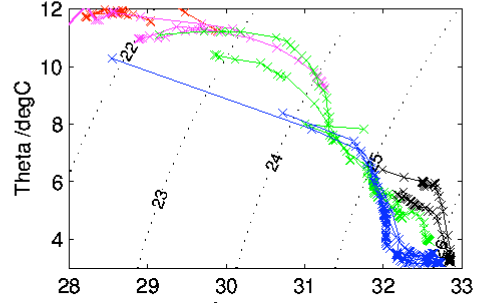
PreCalSept04, (Woodgate 18-Sep-2004)



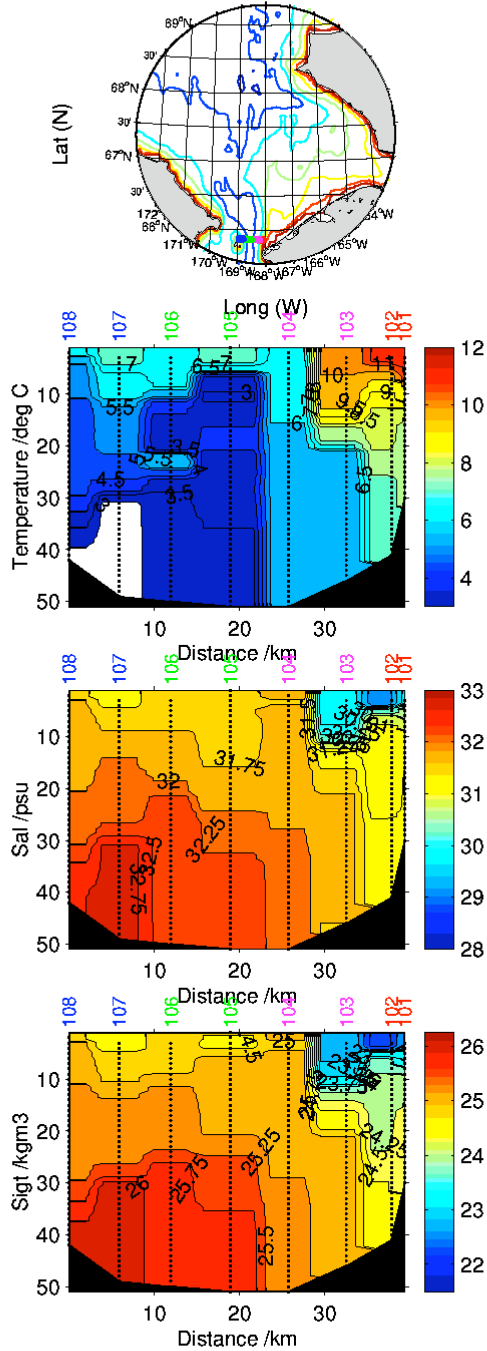
HX290 Aug/Sept 2004 – NBS 099to086



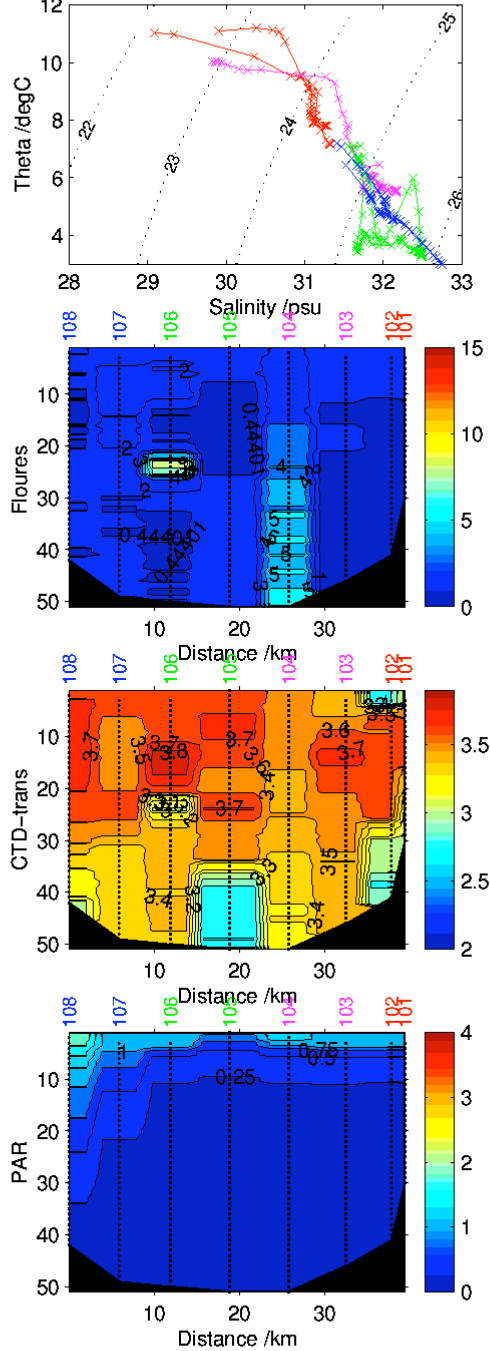
PreCalSept04, (Woodgate 18-Sep-2004)



HX290 Aug/Sept 2004 – MBS 108to101

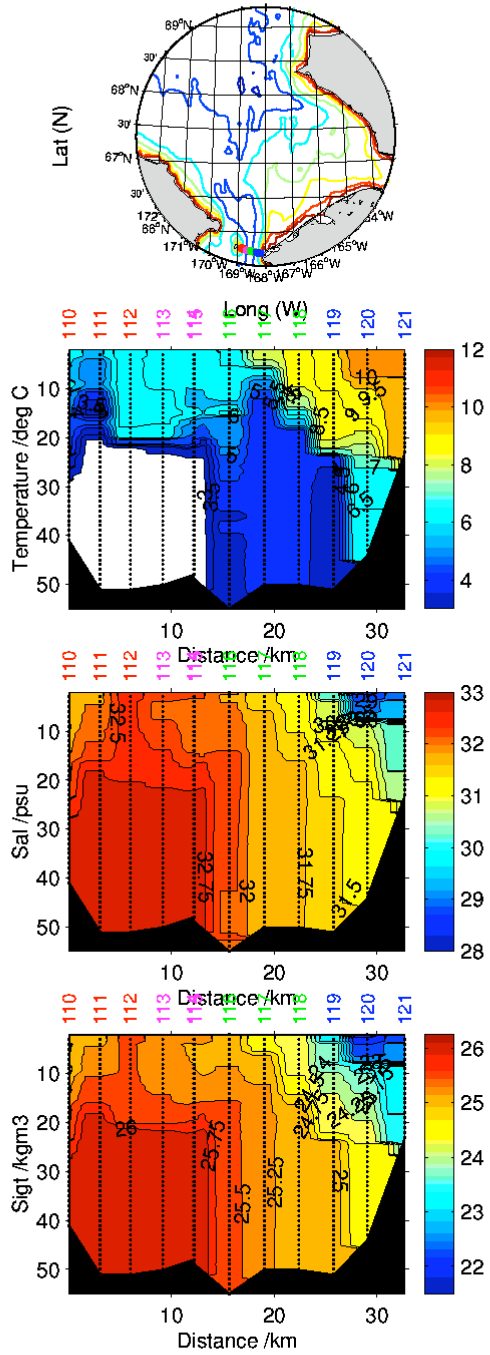


PreCalSept04, (Woodgate 18-Sep-2004)





HX290 Aug/Sept 2004 – BSL(2) 110to121



PreCalSept04, (Woodgate 18-Sep-2004)

