

MRR-2 profiling radar data (Chazy, NY) – post-processed [UAlbany, NYSM]

Authors:

Justin R. Minder (lead author, corresponding author)
Associate Professor
Department of Atmospheric and Environmental Sciences
University at Albany
ETEC 496
1400 Washington Avenue
Albany, NY 12222
jminder@albany.edu
518-437-3732
ORCID: 0000-0001-7182-7898

Nathan Bain
New York State Mesonet
University at Albany
Albany, NY
nbain@albany.edu

W. Massey Bartolini
Department of Atmospheric and Environmental Sciences
University at Albany
Albany, NY
mbartolini@albany.edu

Karl Hemker Jr.
New York State Mesonet
University at Albany
Albany, NY
khemker@albany.edu

Scott McKim

New York State Mesonet

University at Albany

Albany, NY

smckim@albany.edu

1. Data Set Description

- 1.1. **Introduction:** This dataset contains post-processed data from a METEK vertically profiling K-band Micro Rain Radar (MRR-2) deployed at Chazy, New York in support of the WINTRE-MIX field campaign (https://www.eol.ucar.edu/field_projects/wintre-mix). The instrument provides vertical profiles of reflectivity, Doppler velocity, and spectrum width. The site sits in the northern end of the Lake Champlain Valley. Several other sites also collected MRR data during WINTRE-MIX. Data from these other sites will also be made available in the WINTRE-MIX data archive (https://data.eol.ucar.edu/master_lists/generated/wintre-mix/).
- 1.2. **Data version:** v1.0, 8 July 2022. DOI: <https://doi.org/10.26023/99NP-A50Y-V60F>
- 1.3. **Time period covered:** 7 January 2022 – 20 April 2022
- 1.4. **Location:**
 - The MRR-2 was mounted on a tripod atop a roof (Fig. 1), co-located with a Parsivel disdrometer and the profiler instruments of the New York State Mesonet Chazy profiler station (PROF_CHAZ; http://nysmesonet.org/about/sites#network=profiler&stid=prof_chaz). The approximate location is shown in Fig. 2.
 - Latitude: 44.889°
 - Longitude: -73.46634°
 - Elevation: 74.3 m MSL
- 1.5. **Data frequency:** 60 second
- 1.6. **Web address:** Preliminary MRR-2 data are visualized as “quick look” plots on the WINTRE-MIX field catalog (<https://catalog.eol.ucar.edu/wintre-mix/114/date/>).
- 1.7. **Dataset restrictions:** Please refer to the WINTRE-MIX data policy (<https://www.eol.ucar.edu/content/wintre-mixdata-policy>) as well as the WINTRE-MIX data management plan

(https://www.eol.ucar.edu/system/files/Data_Management_Plan-1Dec2021.pdf)
for more information regarding dataset restrictions and dissemination.

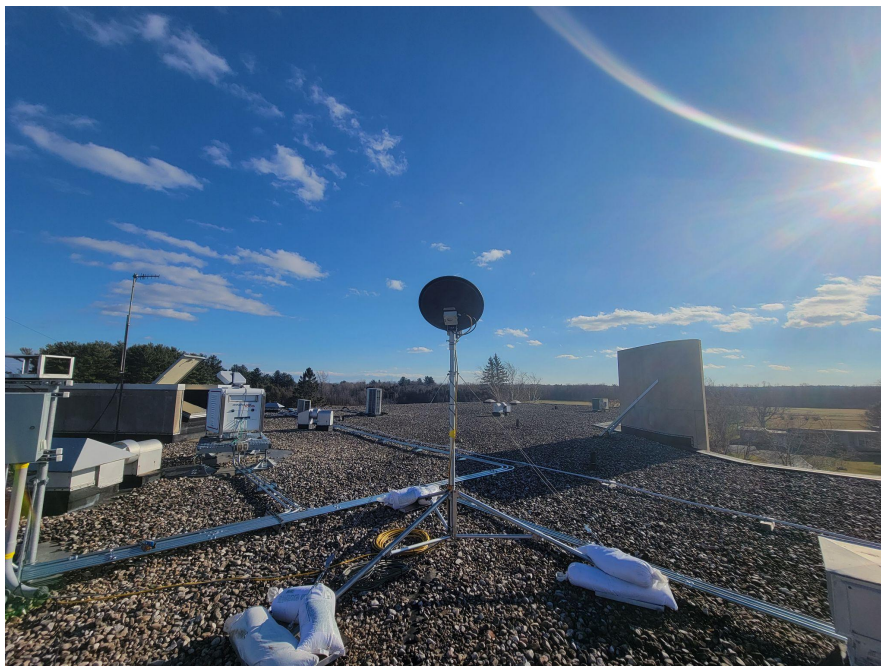
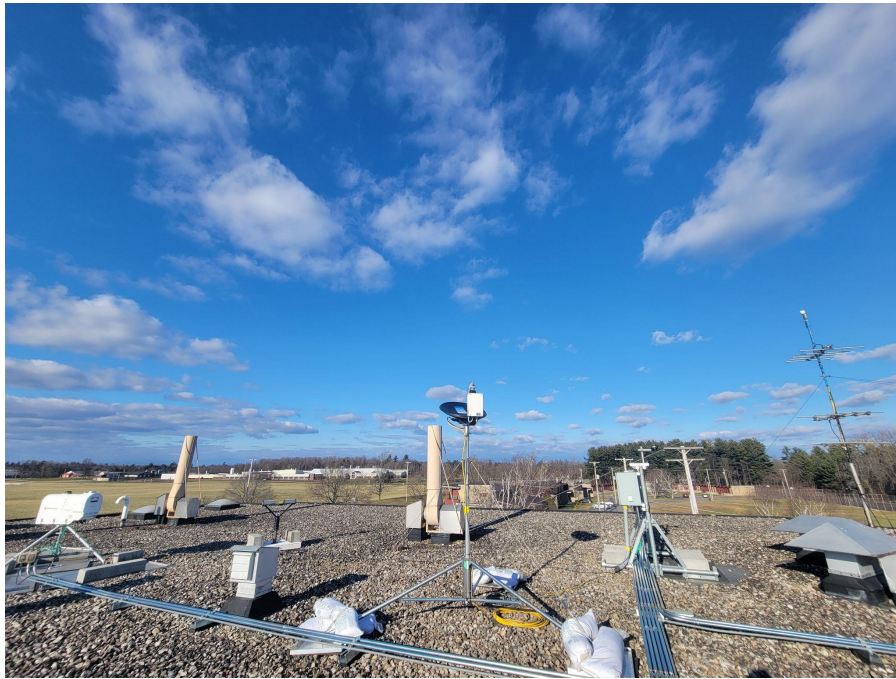


Fig. 1. Photos of the Chazy MRR-2, taken at the time of deployment showing mounting and nearby surroundings.

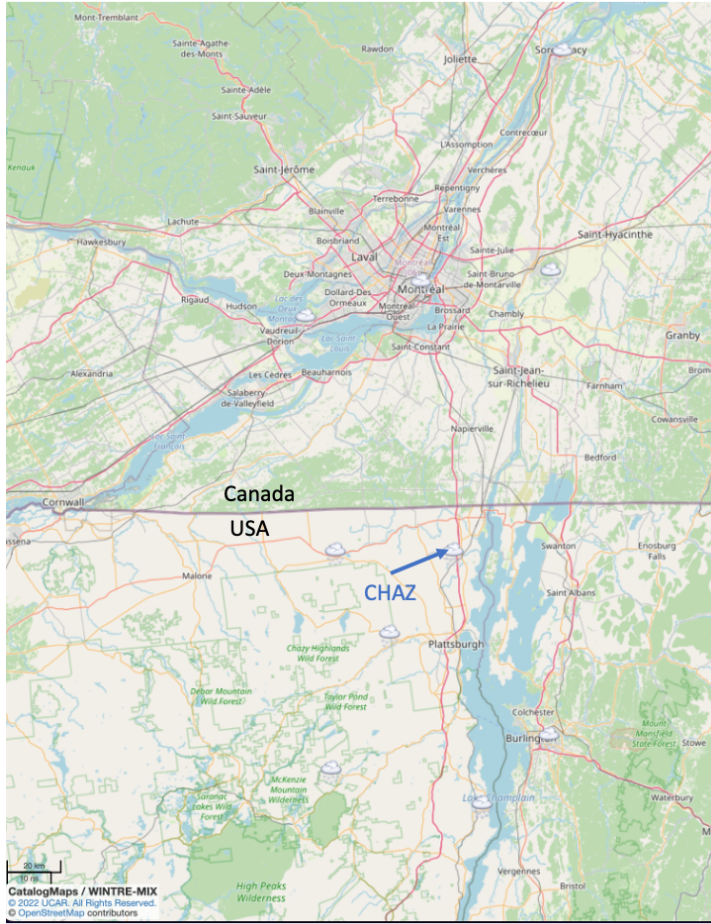


Fig. 2. Approximate location of Chazy, NY MRR-2 radar deployment (CHAZ).

2. Instrument Description

A METEK K-band FM-CW Micro Rain Radar-2 (MRR-2,<http://metek.de/product/mrr-2/>) was deployed at CHAZ (Fig. 1). The attributes of the MRRs are summarized in Table 1. More detailed technical information on the MRR2 is available in METEK (2015, 2021).

Table 1: Technical specifications and configuration settings for the MRR-2

<u>Parameter</u>	<u>Value</u>
Transmit power	50 mW
Frequency	24 GHz

Number of range gates	32
Antenna heating	230 VAC / 24 VDC, 25 W
Beam width	2 degrees
Range resolution used	200 m
Raw data collection frequency	10 s
Processed data frequency	60 s

3. Data Collection and Processing

The MRR-2 was configured to collect data every 10 seconds with a 200-m range gate spacing (Table 1). Antenna heating was used to prevent accumulation of snow and ice on the dish. MRR-2 raw data (.raw files) was logged onto a Windows PC using the METEK MRR Control Software as described in METEK (2021) and grouped into daily files.

Post-processing of the data is accomplished using version 0.104 of the IMProToo software (Maahn, 2021), with METEK .raw files as input. This processing reduces noise, improves the effective sensitivity of the radar, and provides velocity dealiasing. During post-processing, data are averaged into 60-second samples. More information on the goals, basis, and methods of this post-processing procedure can be found in Maahn and Kollias (2012). The original .raw data files are archived separately in a companion dataset: *MRR-2 profiling radar data (Chazy, NY) – raw [UAlbany, NYSM]*.

4. Data format

Files are daily, containing 24 hours of data, and are named with the following format:

WINTRE-MIX_MRR2_CHAZ_YYYYMMDD.nc

where *CHAZ* represents the site identifier and *YYYYMMDD* is the date of data collection in UTC.

The post-processed data is provided in netCDF4 format. The derived variables are listed in Table 2. Additional metadata is provided in the netCDF file.

Table 2: Variables recorded in processed data files

<u>Field Name</u>	<u>Description</u>	<u>Unit</u>
eta	Spectral reflectivities*	mm ⁶ /m ³
eta_noDA	Spectral reflectivities NOT dealised	mm ⁶ /m ³
etaMask	Noise mask of eta 0: signal 1: noise	-
etaMask_noDA	Noise mask of eta NOT dealised 0: signal 1: noise	-
etaNoiseAve	Mean noise of one Doppler spectrum in the same units as eta, never dealised	mm ⁶ /m ³
etaNoiseStd	Standard deviation of noise of one Doppler spectrum in the same units as eta, never dealised	mm ⁶ /m ³
height	Height above instrument	m
kurtosis	Kurtosis of the most significant peak	m/s
kurtosis_noDA	Kurtosis of the most significant peak, not dealised	m/s
leftSlope	Slope at the left side of the peak	dB/(m/s)
leftSlope_noDA	Slope at the left side of the peak, not dealised	dB/(m/s)

peakVelLeftBorder	Doppler velocity of the left border of the peak	m/s
peakVelLeftBorder_noDA	Doppler velocity of the left border of the peak, not deliased	m/s
peakVelRightBorder	Doppler velocity of the right border of the peak	m/s
peakVelRightBorder_noDA	Doppler velocity of the right border of the peak, not dealised	m/s
quality	Data quality flag. See netCDF file metadata for a detailed description.	-
range	Range bins	-
rightSlope	Slope at the right side of the peak	dB/(m/s)
rightSlope_noDA	Slope at the right side of the peak, not dealised	dB/(m/s)
skewness	Skewness of the most significant peak	m/s
skewness_noDA	Skewness of the most significant peak, not dealised	m/s
SNR	Signal-to-noise ratio of the most significant peak, never dealised	dB
spectralWidth	Spectral width of the most significant peak	m/s
spectralWidth_noDA	Spectral width of the most significant peak, not dealised	m/s
TF	Transfer function	-
time	Measurement time	Seconds since 1970-01-01

velocity	Doppler velocity bins. If dealiasing is applied, the spectra are triplicated.	m/s
velocity_noDA	Original, non-dealiased, Doppler velocity bins	m/s
W	Mean Doppler velocity of the most significant peak	m/s
W_noDA	Mean Doppler velocity of the most significant peak, not dealiased	m/s
Ze	Reflectivity of the most significant peak	dBZ
Ze_noDA	Reflectivity of the most significant peak, not dealiased	dBZ

* If dealiasing is applied, the spectra are triplicated, thus up to three peaks can occur from -12 to +24 m/s. However, only one peak is not masked in etaMask.

5. Data Remarks

No major data artifacts were noticed in review of the data. Some spurious weak echos are occasionally found above 5 km MSL in the data, perhaps associated with local sources of microwave interference. Table 3 summarizes issues with missing or suspect data that affected specific days.

Table 3: Summary of missing and suspect data

<u>Date (YYYY-MM-DD)</u>	<u>Notes</u>
2022-02-16	Partial missing data (data logging PC down)
2022-02-17	Partial missing data (data logging PC down)
2022-03-16	Partial missing data (data logging PC down)
2022-03-17 – 2022-03-20	Missing data (data logging PC down)

2022-03-21	Partial missing data (data logging PC down)
2022-03-25	Some low-level data masked in post-processing (~1100–1300 UTC)
2022-04-09	Some low-level data masked in post-processing (~1000–1800 UTC)
2022-04-16	Some low-level data masked in post-processing (~0700–0800 UTC)
2022-04-20	Partial missing data (data logging PC down)

6. References

Maahn, M., 2021: IMProToo Improved Mrr Processing Tool. Version 0.104,
<https://github.com/maahn/IMProToo>

*METEK, 2021: MRR-2 Micro Rain RADAR User Manual. *METEK GmbH*.

*METEK, 2015: MRR Physical Basics. *METEK GmbH*.

* *Metek MRR manuals are provided as attachments.*

7. Appendix

Suggested GCMD keywords to accompany this dataset are provided below in no particular order:

- Solid precipitation
- Frozen precipitation
- Precipitation profiles
- Melting layer height
- Rain
- Freezing rain
- Drizzle
- Freezing drizzle
- Ice pellets
- Snow
- Ice storms
- Snow storms
- Extratropical cyclones
- Radar
- Doppler velocity
- Radar reflectivity
- Spectrum width